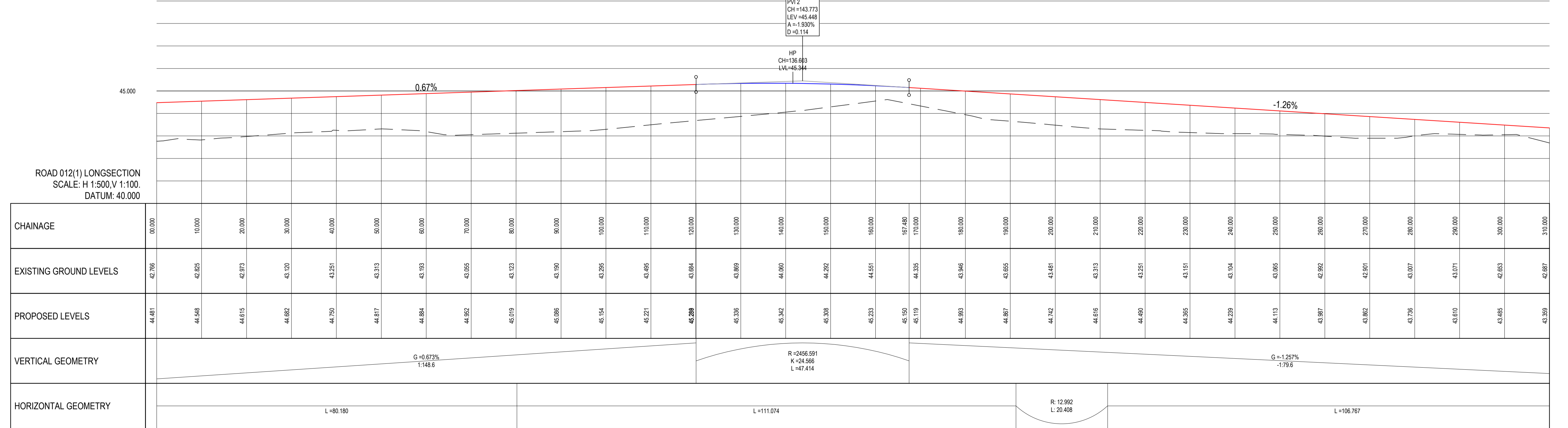
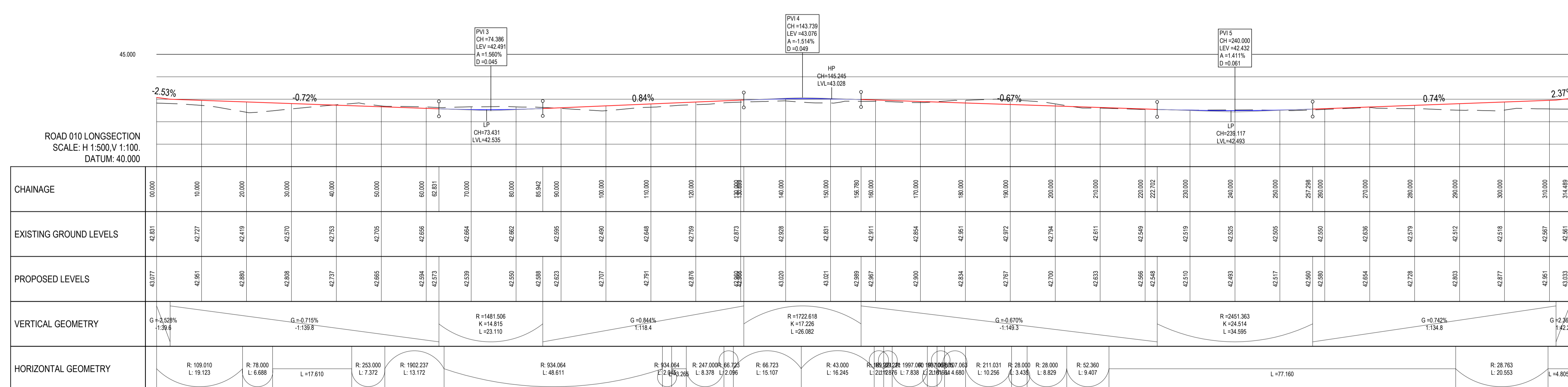
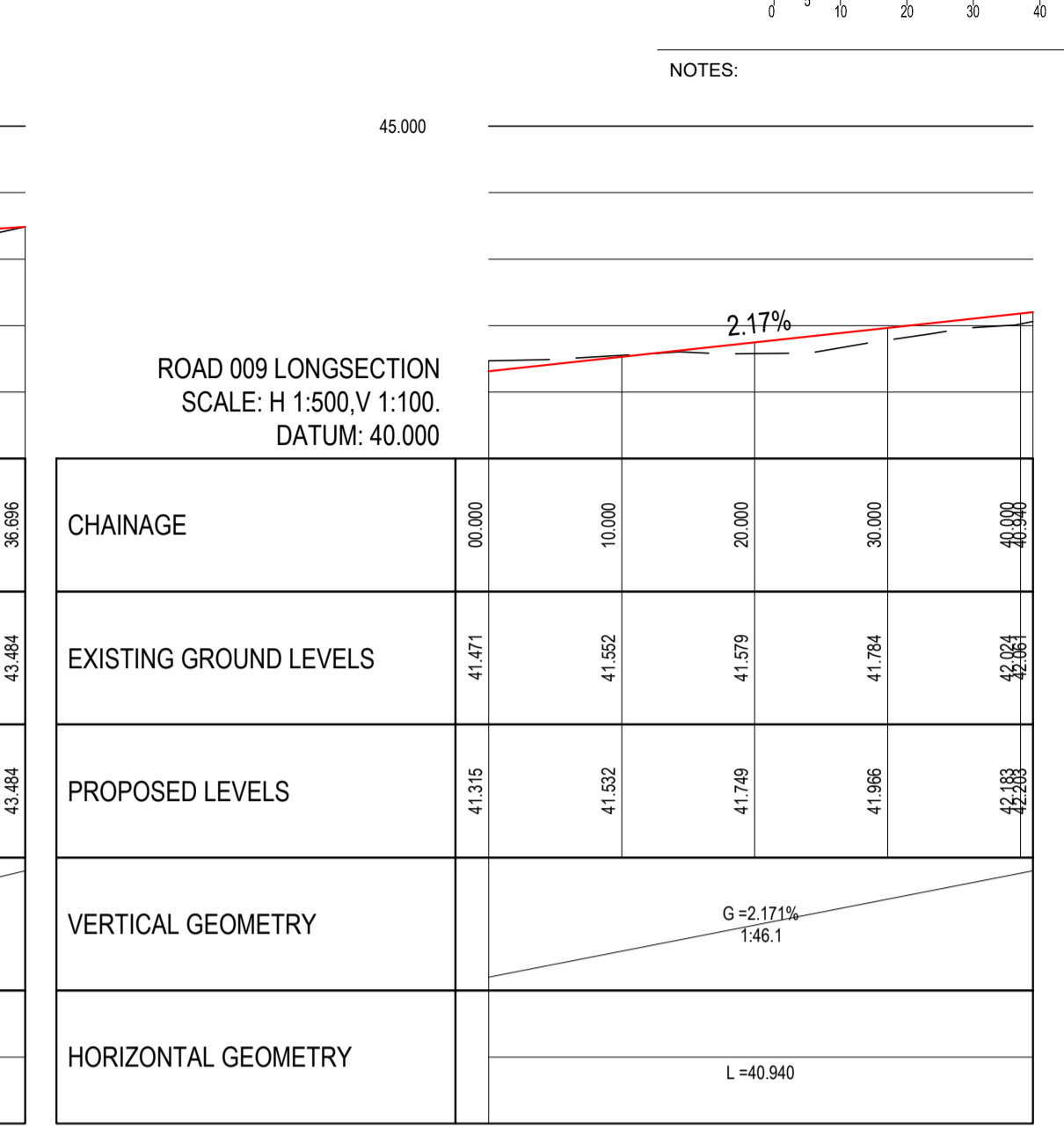
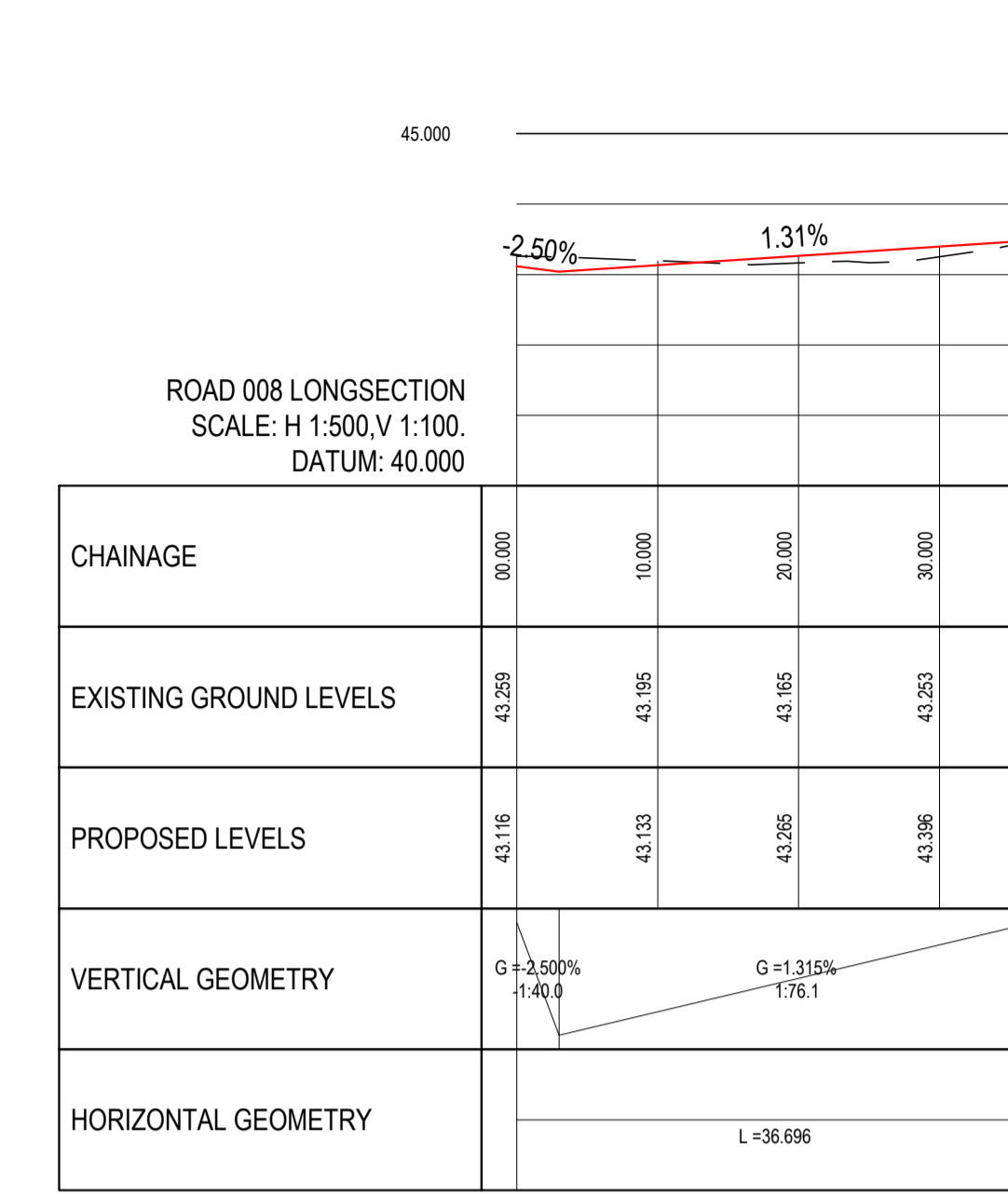
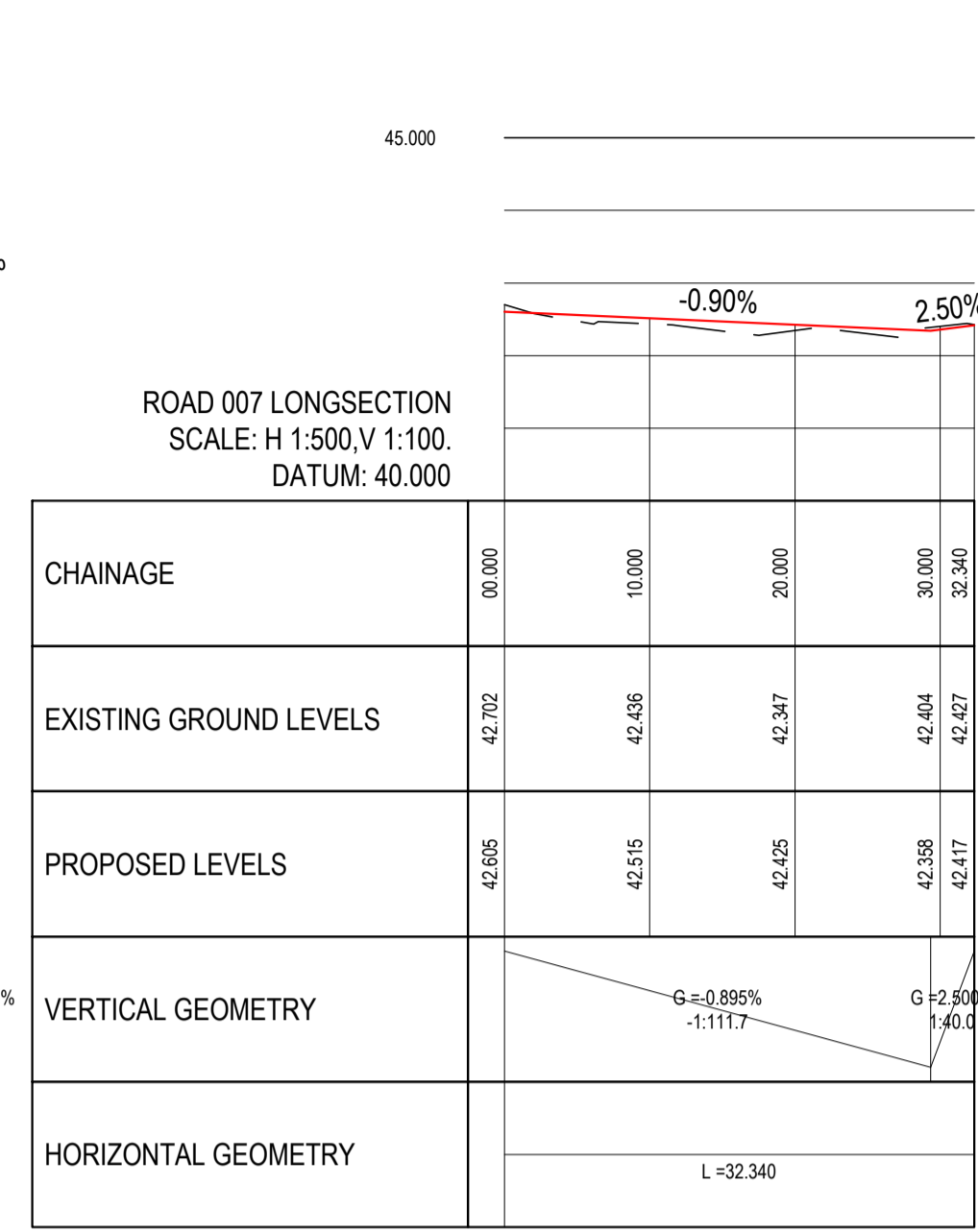
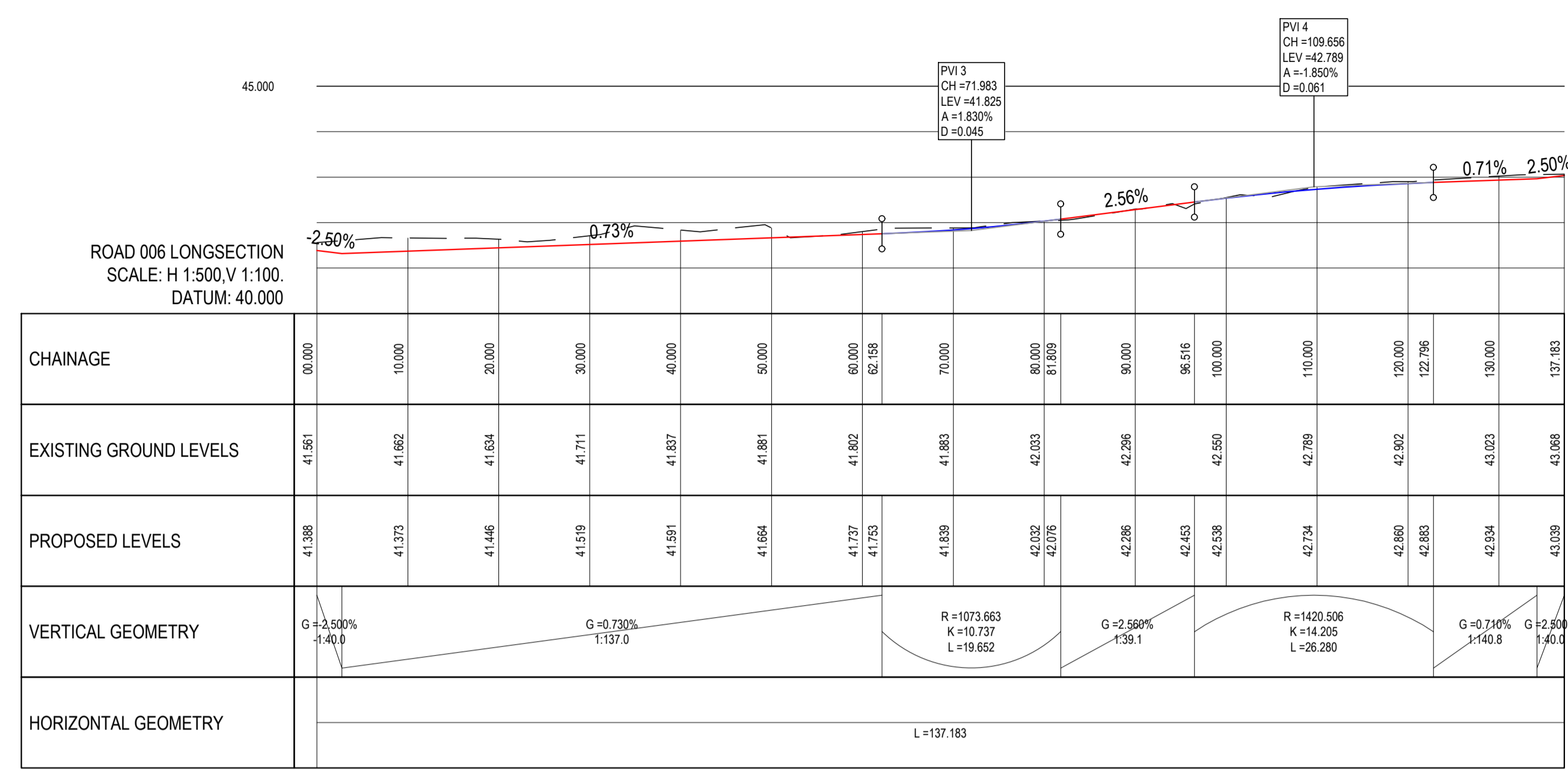


NOTES:



P01	25-01-21	ISSUED FOR PLANNING	KGO	LMCL
rev	date	description	by	chkd.
A		Approved		
B		Approved with comments		
C		Do not use		
client approval				
suitability		issue purpose		
S2 - INFORMATION		PLANNING		

**DBFL Consulting Engineers**  
Civil, Structural & Transportation Engineering  
www.dbfl.ie

DUBLIN OFFICE: Ormond House, Upper Ormond Quay, Dublin 7, D07 W704  
PHONE: +353 (0) 1 400 4000

CORK OFFICE: Phoenix House, Monahan Road, Cork, T12 H1XV  
PHONE: +353 (0) 21 2204533

WATERFORD OFFICE: Suite 10 The Arkham, Maritime Gate, Canada Street, Waterford, X91 W028  
PHONE: +353 (0) 51 309 500

project ref.  
LISSYWOLLEN RESIDENTIAL DEVELOPMENT AT BRAUNY ROAD, LISSYWOLLEN, ATHLONE, CO. WESTMEATH

drawing title  
**ROAD LONGSECTIONS SHEET 2 OF 6**

architect  
**DELPHI ARCHITECTS**

designed by	LMCL	author	KGO	scale	AS	sheet size	A1
drawing no.	180176-DBFL-RD-SP-DR-C-3001	revision	P01				